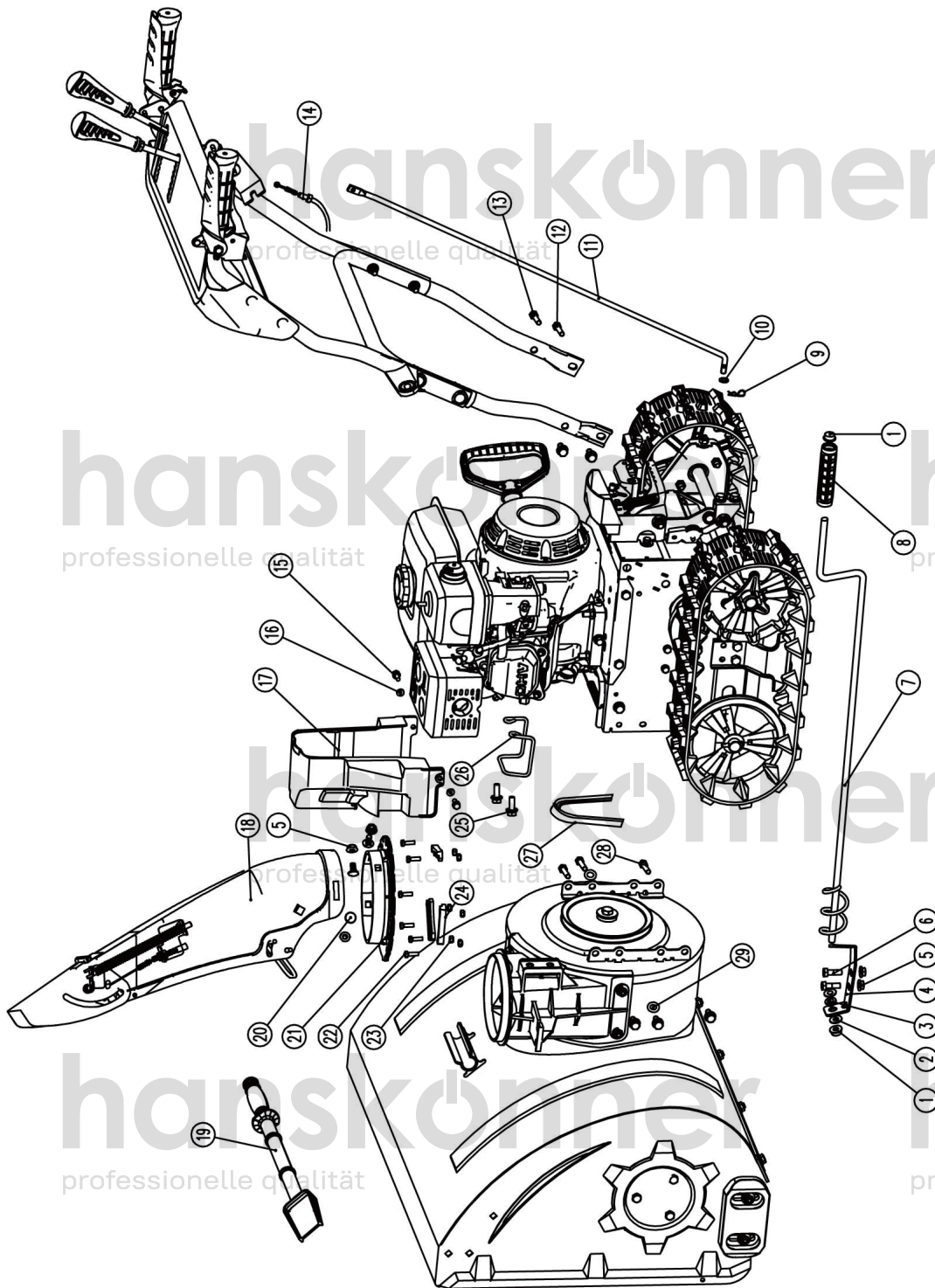


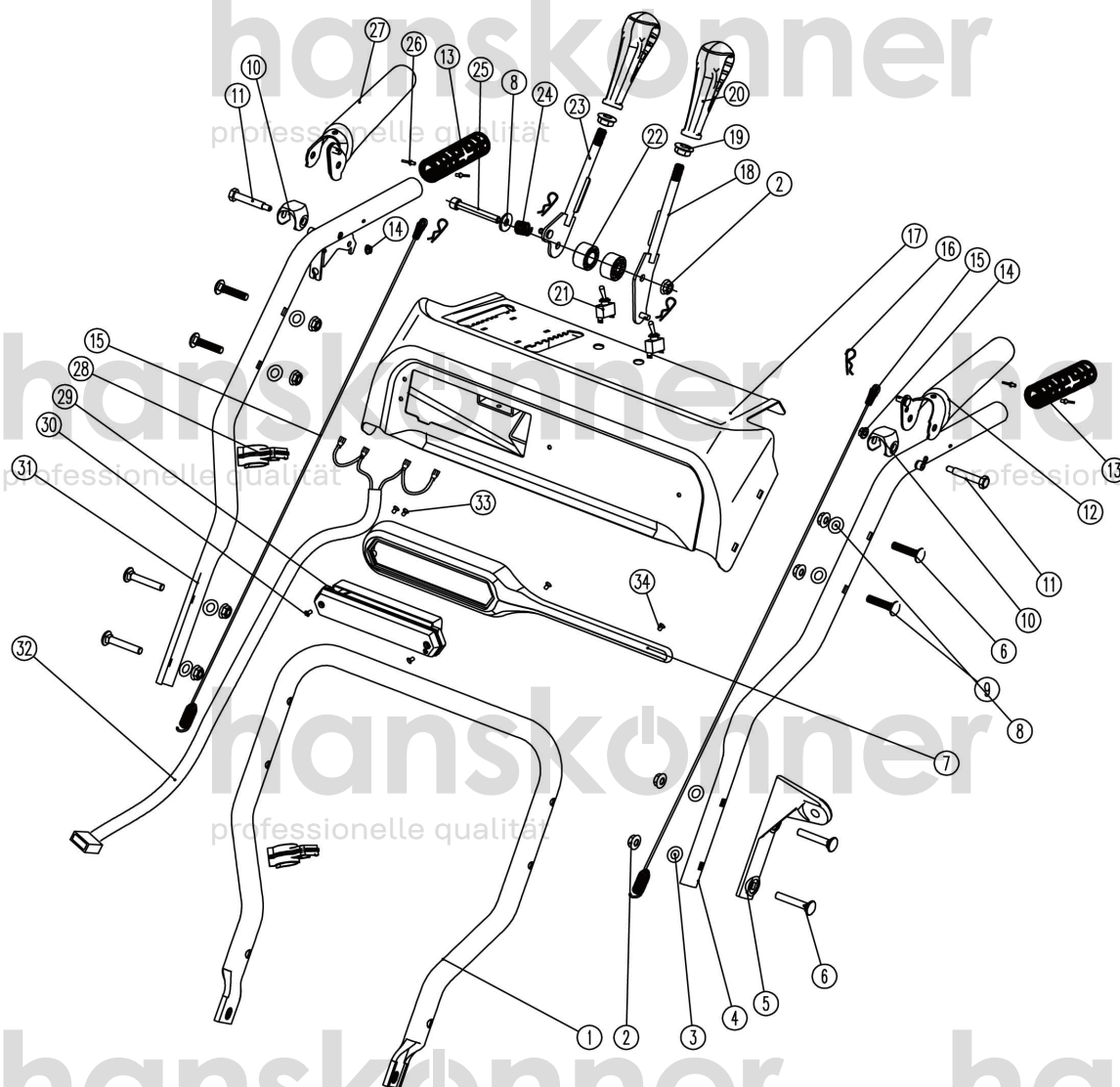
HSTG7661ELT



NO.	DESCRIPTION
1	CAP 9
2	FLAT WASHER 10
3	WASHER FOR SUPPORT
4	SUPPPORT FOR LOWER ROD
5	NUT M8
6	BOLT M8X20
7	ROTATING ROD
8	HANDLE
9	B PIN
10	FLAT WASHER 8
11	CONNECT ROD
12	BOLT M10X25
13	BOLT M10X45
14	DEFLECTOR CABLE
15	SCREW M6X16
16	WASHER FOR BELT COVER
17	BELT COVER
18	CHUTE
19	SNOW SHOVEL
20	BOLT M8X20
21	GEAR PLATE
22	SCREW M6X20
23	NUT M6
24	FIXING PLATE FOR CHUTE
25	BOLT 5/16-24X19
26	BELT ROD
27	BELT 4LXA822E
28	SCREW M8X16
29	BIG WASHER 8

HSTG7661ELT-ex-RU20230407

HSTG7661ELT



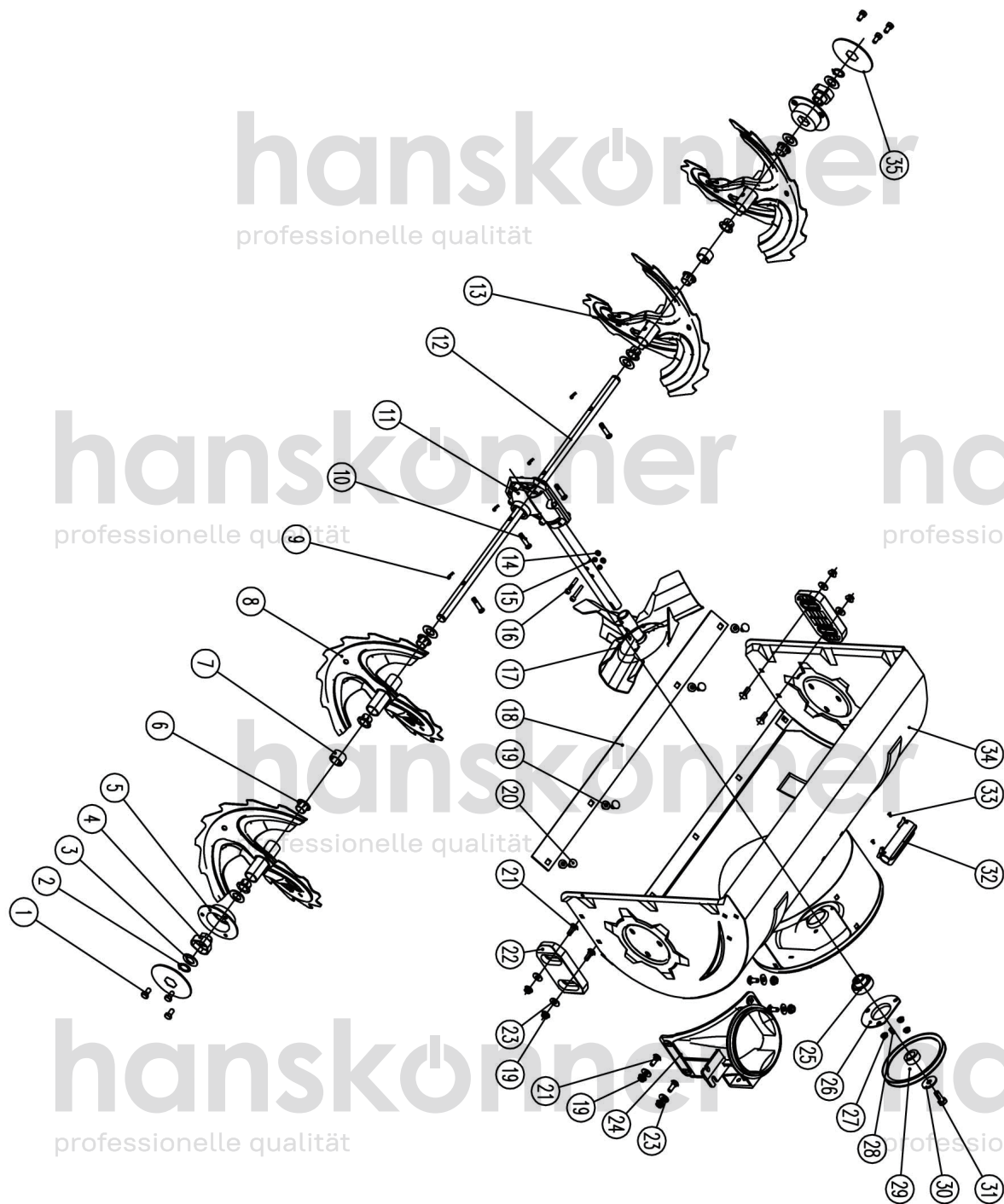
NO.	DESCRIPTION
1	LOWER HANDLE
2	NUT M8
3	WASHER 8
4	UPPER HANDLE (LEFT)
5	SUPPORT FOR ROTATING ROD
6	BOLT M8X45
7	LIGHT COVER
8	WASHER 8
9	BOLT M8X40
10	LEVER WASHER
11	LEVER BOLT
12	LEFT CONTROL LEVER
13	HEATED HANDGRIP
14	NUT M6
15	LONG CABLE
16	B PIN 1.5X25
17	PANEL
18	DEFLECTOR LEVER
19	NUT M10
20	GEAR HANDLE
21	SWITCH (WITH COVER)
22	SHORT SLEEVE
23	WALK LEVER
24	PRESET SPRING
25	SCREW M8X120
26	RIVET 4X10
27	RIGHT CONTROL LEVER
28	CABLE CLIP
29	LED LIGHT
30	SCREW ST3.5X16
31	UPPER HANDLE (RIGHT)
32	ELECTRIC WIRES
33	SCREW ST4.2X13
34	SCREW ST4.2X7.5-F

HSTG7661ELT-ex-RU20230407

hansköpner
professionelle qualität

hansköpner
professionelle qualität

HSTG7661ELT

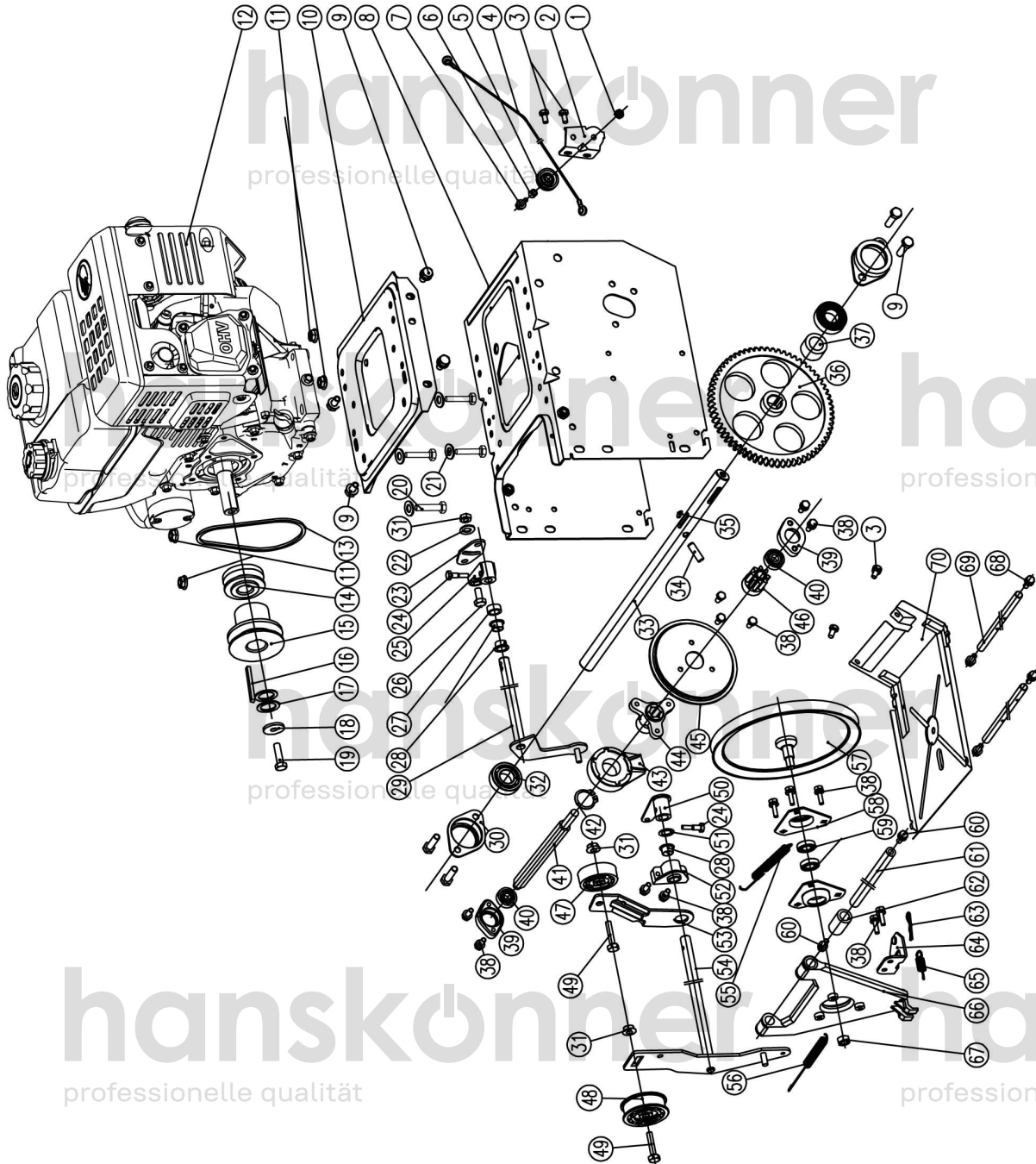


NO.	DESCRIPTION
1	BOLT M8X16
2	CIRCLIP 19
3	WASHER
4	BEARING
5	BEARING COVER
6	PLASTIC CIRCLIP
7	PLASTIC WASHER
8	LEFT AUGER
9	B PIN
10	SAFETY BOLT
11	GEAR BOX
12	OUTPUT SHAFT 24INCH
13	RIGHT AUGER
14	NUT M6
15	ELASTIC WASHER
16	BOLT M6X35
17	FAN
18	SHAVE PLATE 24INCH
19	NUT M8
20	BOLT M8X18
21	BOLT M8X20
22	SKID SHOE
23	WASHER 8
24	CHUTE SEAT
25	BEARING SB204
26	ROUND PLATE
27	NUT M8
28	FLAT KEY A6X6X20
29	BELT PULLEY
30	WASHER 10
31	BOLT M10X25
32	SHOVEL SEAT
33	SCREW ST4.2X9.5
34	HOUSING 24INCH
35	WASHER 50

HSTG7661ELT-ex-RU20230407

hansköpner
professionelle qualität

hansköpner
professionelle qualität



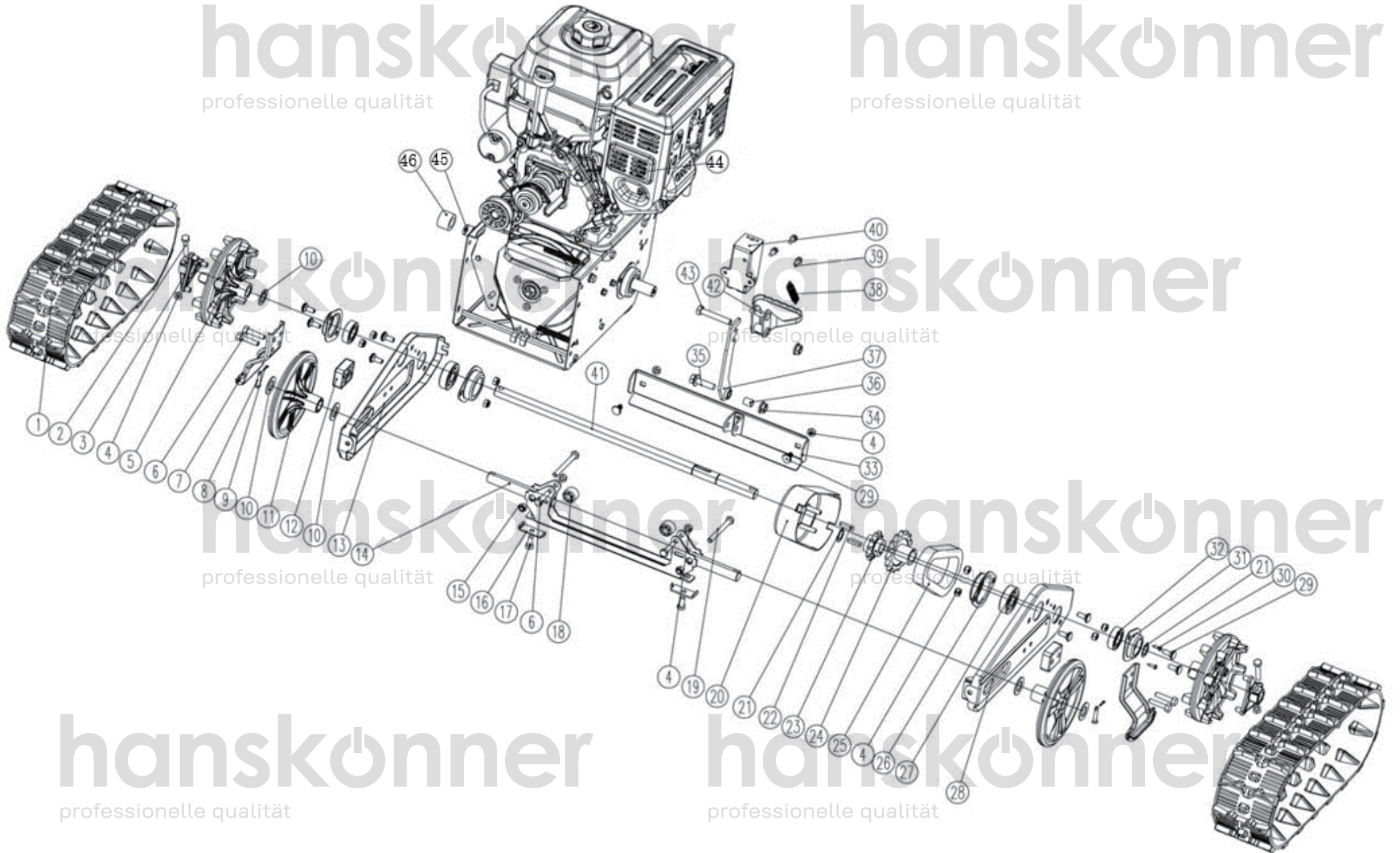
HSTG7661ELT

NO.	DESCRIPTION	NO.	DESCRIPTION
1	NUT M6	36	BIG GEAR
2	PULLEY SEAT	37	SHAFT SLEEVE
3	SCREW M6X12	38	BOLT M6X16
4	SHORT CABLE	39	INNER BEARING SEAT
5	PULLEY	40	BEARING 6000-2RS
6	SHAFT SLEEVE	41	HEXAGON AXIS
7	BOLT M6X20	42	CIRCLIP 25
8	TRANSMISSION CASE	43	SHIFT BEARING
9	SCREW M8X16	44	SEAT FOR RUBBER RING
10	ENGINE SEAT	45	RUBBER RING
11	NUT M8	46	GEAR
12	ENGINE	47	SMALL TENSION PULLEY
13	BELT 3LXP825	48	BIG TENSION PULLEY
14	DRIVE PULLEY	49	BOLT M8X30
15	DRIVE PULLEY 2	50	TENSION CONNECTOR
16	FLAT KEY 4.7*4.7*50	51	SPRING WASHER 13
17	WASHER FOR DRIVE PULLEY	52	FIX PLATE
18	WASHER 8.5X30X4	53	SMALL TENSION PLATE
19	BOLT M8X1X30	54	BIG TENSION PLATE
20	BOLT M8X40	55	SPRING
21	WASHER	56	BRAKE SPRING
22	FLAT WASHER 8	57	BELT PULLEY
23	GEAR PLATE	58	BEARING SEAT
24	BOLT M6X20	59	BEARING 6002
25	GEAR CONNECTOR	60	BOLT M8X16
26	BOLT M8X20	61	SUPPORT ROD
27	WASHER	62	BUSHING
28	PLASTIC SHAFT SLEEVE	63	B PIN 1.5X25
29	FORK LIFT	64	CONNECTING PLATE
30	BEARING SEAT	65	RESET SPRING
31	NUT M8	66	SUPPORT PLATE FOR FRICTION DISC
32	BEARING 6304+2RS	67	NUT M12
33	SHAFT FOR TRACK	68	SCREW M6X16
34	PIN 6X30	69	SUPPORT ROD
35	FLAT KEY 6X6X22	70	BOTTOM PLATE FOR TRANSMISSION CASE

HSTG7661ELT-ex-RU20230407

hanskonner
professionelle qualität

hanskonner
professionelle qualität

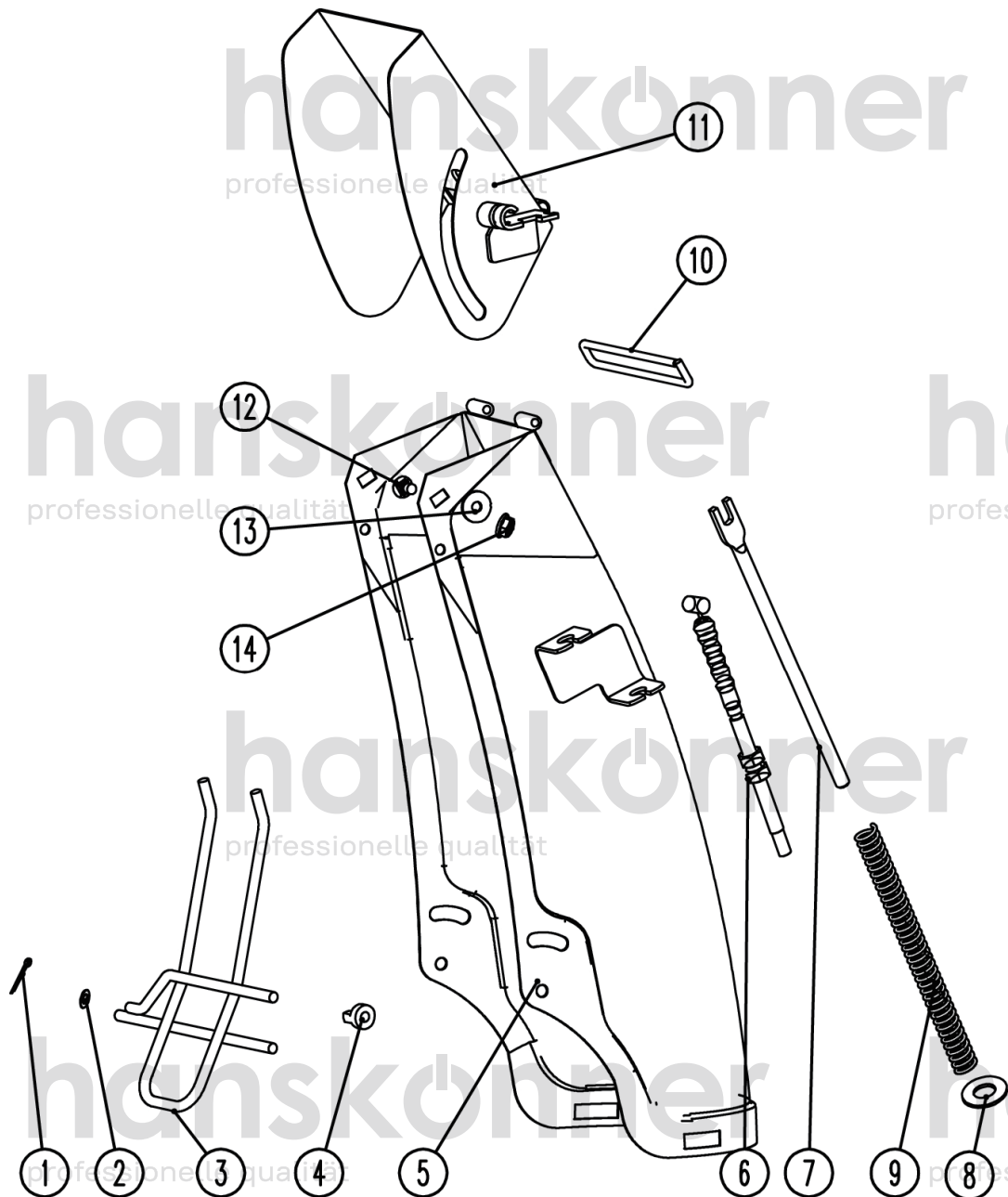


hanskonner
professionelle qualität

hanskonner
professionelle qualität

HSTG7661ELT

NO.	DESCRIPTION
1	TRACK A
2	BOLT M8X45
3	CONNECTING PLATE FOR TRACK WHEEL
4	NUT M8
5	TRACK WHEEL
6	BOLT M8X35
7	SUPPORT PLATE
8	SHAFT WITH HOLE 2
9	COTTER PIN 2X16
10	WASHER 20.5X30X1
11	SEMI TRACK WHEEL
12	BUSHING
13	RIGHT TRACK PLATE
14	FRONT SHAFT
15	NUT M8
16	BUCKLE FOR TRACK
17	SCREW M8X16
18	PULLEY FOR FRONT SHAFT
19	BOLT M8X90
20	CHAIN WHEEL COVER
21	CIRCLIP 20
22	FLAT KEY 6X6X28
23	CHAIN WHEEL 10A-Z10
24	CHAIN WHEEL 10A-Z15
25	CHAIN 10A-27
26	BEARING SEAT
27	BEARING 6304-2RS
28	LEFT TRACK PLATE
29	BOLT M8X16
30	SCREW ST4.2X9.5-F
31	BEARING SEAT
32	BEARING 6004
33	TRACK BEAM
34	NUT M10
35	BOLT M10X40
36	BUSHING 12.8X15.5
37	TRACK SUPPORT
38	PEDDAL SPRING
39	SCREW M6X12
40	BUCKLE SEAT
41	REAR SHAFT
42	BUCKLE PEDDAL
43	BOLT M10X50
44	TRANSMISSION BOX
45	DRIVE SHAFT
46	BEARING SLEEVE A



hanskonner

HSTG7661ELT

NO.	DESCRIPTION
1	cap
2	plastic washer
3	safety fence
4	washer for fence
5	chute welded
6	chute cable
7	support
8	big washer C8
9	spring for chute
10	hinge shaft
11	deflector
12	bolt M6x16
13	big washer C6
14	nut M6

HSTG7661ELT-ex-RU20230407

hanskonner

professionelle qualität

engine for HSTG7661ELT

hanskonner hanskönner

professionelle qualität

professionelle qualität

hanskonner hanskönner

professionelle qualität

professionelle qualität

hanskonner hanskönner

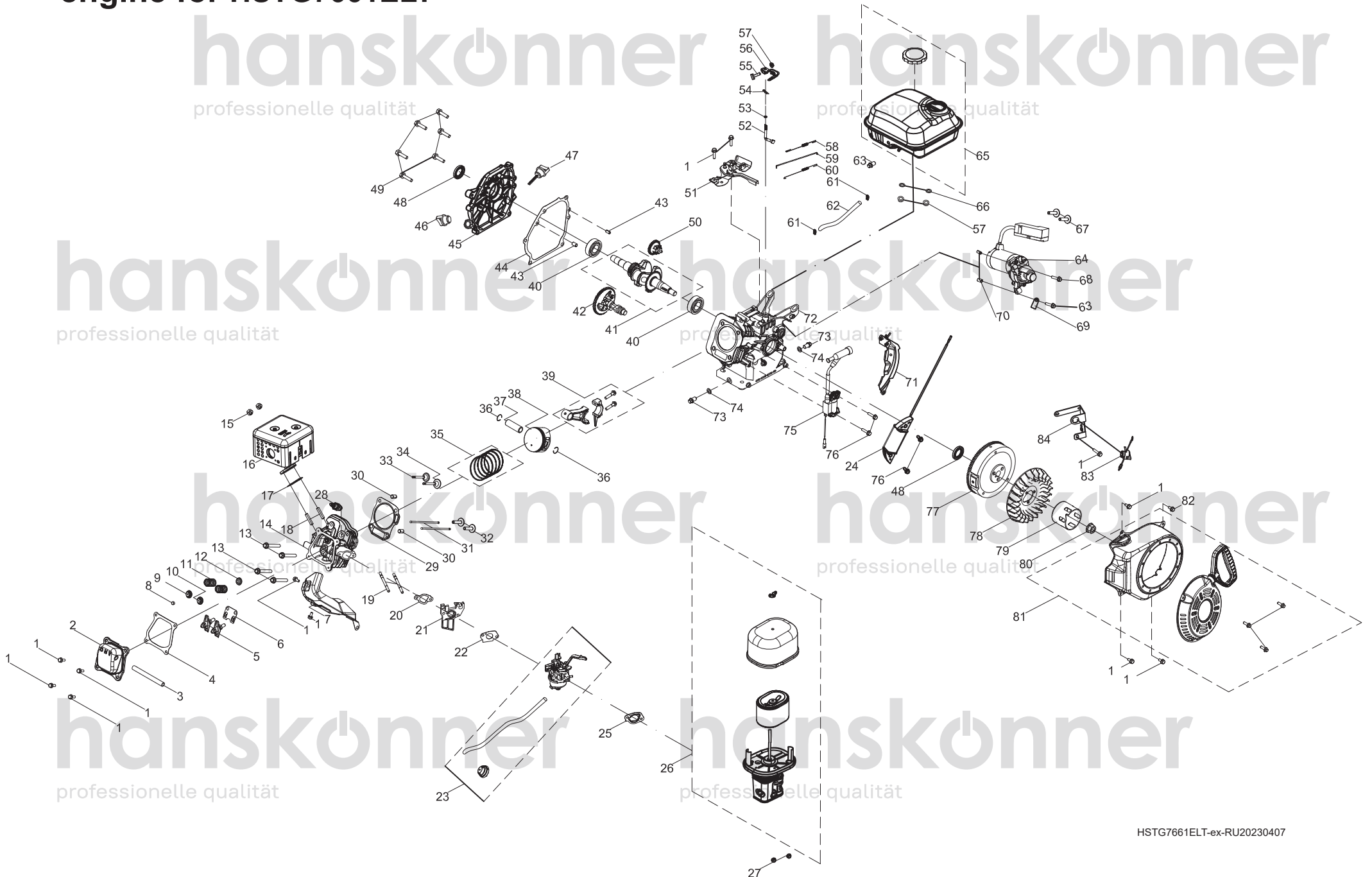
professionelle qualität

professionelle qualität

hanskonner hanskönner

professionelle qualität

professionelle qualität



engine for HSTG7661ELT

NO.	DESCRIPTION	NO.	DESCRIPTION
1	Bolt, M6×12	43	Pin, φ8×14
2	Valve Cover	44	Gasket, Crankcase
3	Breather Hose	45	Crankcase Cover
4	Gasket, Valve Cover	46	Oil Plug
5	Rocker Arm Assembly	47	Dipstick
6	Rocker Arm Base	48	Oil Seal, φ25×φ41.25×6
7	Shroud	49	Bolt, M8×32
8	Valve Adjust Cap, Exhaust	50	Governor Gear
9	Valve Spring Seat	51	Governor Gear Bracket Assembly
10	Valve Spring Seat	52	Governor Gear Shaft
11	Valve Spring	53	O-Ring, φ5.2×1.9
12	Intake Valve Seal	54	Cotter Pin
13	Bolt, M8×60	55	Bolt, M6×21
14	Cylinder Head	56	Governor Lever
15	Nut, M8	57	Nut, M6
16	Muffler	58	Governor Spring
17	Gasket, Muffler	59	Throttle Linkage
18	Stud, M8×34	60	Idle Spring
19	Stud, M6×108	61	Clamp
20	Gasket, Carburetor Insulator	62	Fuel Hose
21	Insulator	63	Bolt, M6×28
22	Gasket, Carburetor	64	Electric Starter
23	Carburetor	65	Fuel Tank
24	Charging Coil	66	Damping Pad
25	Gasket, Carburetor	67	Bolt, M4×60
26	Air Filter Assembly	68	Bolt, M6×35
27	Nut, M6	69	Clip Base
28	Spark Plug	70	Pin, φ8×10
29	Gasket, Cylinder Head	71	Lower Shield
30	Pin, φ10×16	72	Crankcase
31	Push Rod	73	Drain Bolt M10×15
32	Tappet	74	Washer, φ10×2×φ16
33	Exhaust Valve	75	Ignition Module
34	Intake Valve	76	Bolt, M6×25
35	Piston Ring Set	77	Flywheel
36	Circlip	78	Cooling Fan
37	Piston Pin	79	Starter Cup
38	Piston	80	Nut, M14×1.5
39	Connecting Rod Assembly	81	Recoil Starter
40	Bearing, 6205	82	Bolt, M6×14
41	Crankshaft	83	Stop Switch
42	Camshaft	84	Bracket